

THE PROPERTY CO. GROUP



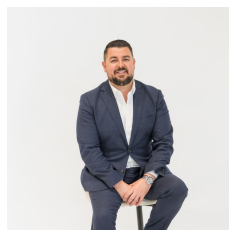
22a Milner Avenue Kirrawee NSW

4  3  2 

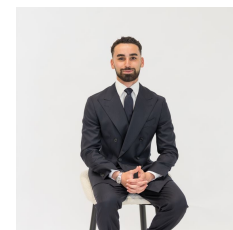
Beautifully designed with a focus on space, light and modern comfort, this impressive residence delivers effortless indoor-outdoor living. High ceilings and a soft neutral palette enhance the sense of openness, while a statement kitchen with Smeg appliances and discreet butler's pantry anchors the home. Living and dining zones flow seamlessly to a covered alfresco with built-in BBQ, overlooking a sparkling in-ground pool and level grassed yard.

Offering four bedrooms, second living space upstairs, the main features a walk-in robe, ensuite and balcony, plus a versatile ground-floor guest with two way bathroom access. Positioned for lifestyle, just 750m to Kirrawee Station and moments to Kirrawee Oval, all within the Kirrawee High

Type : House
Price : For Sale.
Land Size : 334.45 sqm
View : <https://www.thepropertyco.com.au/8686895>



Christopher Igoe
02 8320 6666

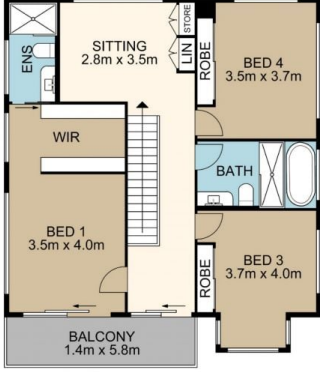
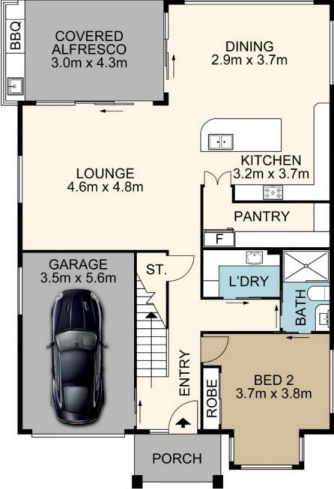


Sebastian Hughes
02 8320 6666

[For full version visit the website](https://www.thepropertyco.com.au)

<https://www.thepropertyco.com.au>

THE PROPERTY CO. GROUP



Please note these measurements are approximate only. The plan is intended as a rough guide for illustrative purpose. It is not warranted or guaranteed to be correct nor is it part of the scale or contract

