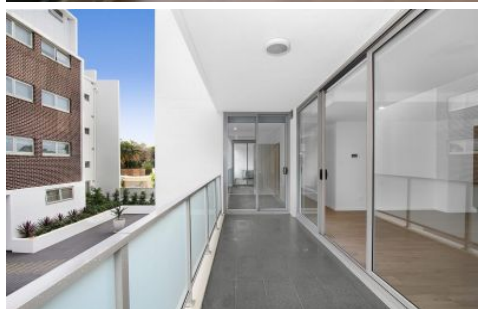


THE PROPERTY CO. GROUP



105/13-15 Weyland Street Punchbowl NSW

2  1  1 

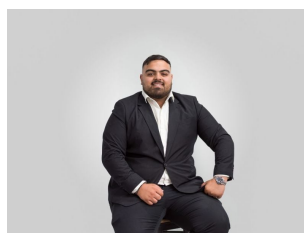
Blending refined elegance with a modern aesthetic, this beautifully designed apartment offers exceptional comfort, quality finishes, and a smart, functional layout. Enjoy light filled, stylish interiors positioned in the vibrant heart of Sydney's thriving South West, just moments from Bankstown Central and Roselands Shopping Centre.

- Light-filled open-plan living and dining enhanced by timber flooring
- Designer kitchen featuring stone benchtops, integrated gas cooktop, and dishwasher
- Two well-proportioned bedrooms, each with built-in wardrobes
- Contemporary bathroom appointed with premium stainless-steel fixtures and fittings

Type : Apartment

Price : Contact Agent.

View : <https://www.thepropertyco.com.au/8676680>



Michael Kavvalos
02 8320 6666



Buster Redman
02 8320 6666

[For full version visit the website](https://www.thepropertyco.com.au)

<https://www.thepropertyco.com.au>



105/13-15 Weyland Street, Punchbowl

All measurements are in meters. This plan is for reference only, and the dimensions are approximate. The information provided is sourced from what is believed to be reliable, but we do not take responsibility and disclaim all liability for any errors, inaccuracies, or misstatements. Interested parties should conduct their own inquiries.