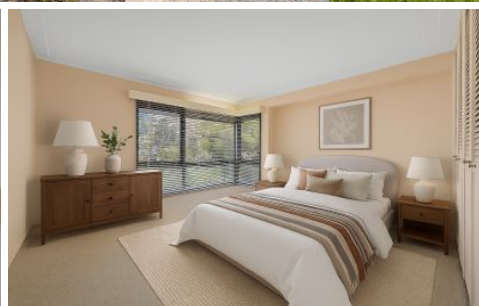


THE PROPERTY CO. GROUP



11 Pinaroo Place Gymea Bay NSW

3 1 2

Tucked away in a peaceful cul-de-sac, this brick home offers a safe and welcoming environment-perfect for children to ride bikes and play outdoors.

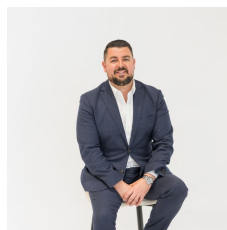
Inside, you'll find three generous bedrooms, a separate lounge and dining area, and a large laundry for everyday convenience. The oversized garage and additional carport provide excellent storage and parking options.

With its family-friendly layout, spacious interiors, and quiet location, this home is ideal for those seeking comfort, practicality, and a great community atmosphere.

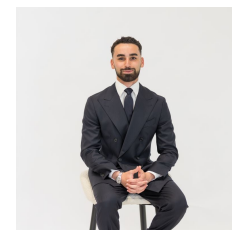
For all your home loan needs, please give the team at The Finance Co. Group a call on 02 8004 5020 or visit

[For full version visit the website](#)

Type : House
Price : \$ 1,770,000
Land Size : 562 sqm
View : <https://www.thepropertyco.com.au/8454395>



Christopher Igoe
02 8320 6666



Sebastian Hughes
02 8320 6666



11 Pinaroo Pl, Gymea Bay

Floor plan produced by ENFORCEFX.COM - All measurements are approximate. Floor plan is not to scale. All information contained here is believed to be reliable, however we cannot guarantee the accuracy and interested persons should rely on their own enquiries.



THE PROPERTY CO.
GROUP