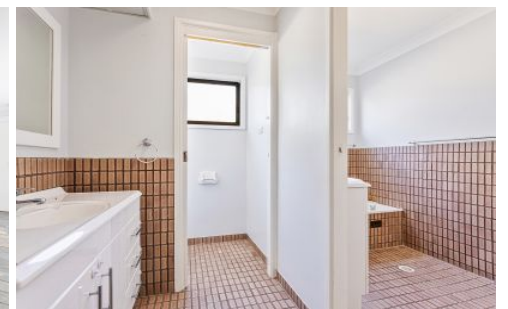


THE PROPERTY CO. GROUP



32 Peppermint Crescent Kingswood NSW

4  1  3 

Discover this well-maintained family residence, ideally situated in a sought-after Kingswood location. With its thoughtful layout and convenient amenities, this home offers comfortable living for families.

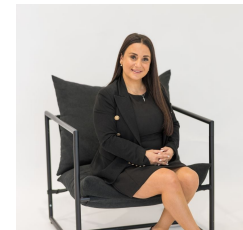
Type : House
Land Size : 811 sqm
View : <https://www.thepropertyco.com.au/8386629>

Key Features:

- ? 4 Generously Sized Bedrooms: all featuring built-in wardrobes.
- ? Well-presented Kitchen: Well-appointed with island bench breakfast bar, ample storage space and stainless-steel appliances
- ? Spacious Lounge room with gorgeous bay windows : Enjoy the spacious living room complete with bay windows with plenty of natural light featuring split system air



Charlize Halloun
02 8320 6666



Rhonda Mikha
02 8320 6666

[For full version visit the website](https://www.thepropertyco.com.au)

<https://www.thepropertyco.com.au>