

# THE PROPERTY CO.

GROUP



2/19-21 Wingello Road Miranda NSW

3 2 4

Welcome to 2/19 Wingello Road, Miranda, a lovely townhouse set in a peaceful location. With Westfield Miranda & train station being a short walk away, this home is perfect for a family who is looking to live in a central location. Features include:

- Only one common wall
- Main bedroom with En-suite & balcony
- Tandem garage with internal access
- Split system air conditioner
- Open plan lounge & dining
- Sun drenched aspect
- Direct drive in access from the street
- North/west yard orientation
- 850m to Westfield Miranda & Train Station

**Type** : Townhouse  
**Land Size** : 215 sqm  
**View** : <https://www.thepropertyco.com.au/8324400>



**Jordan Olar**  
02 8320 6666

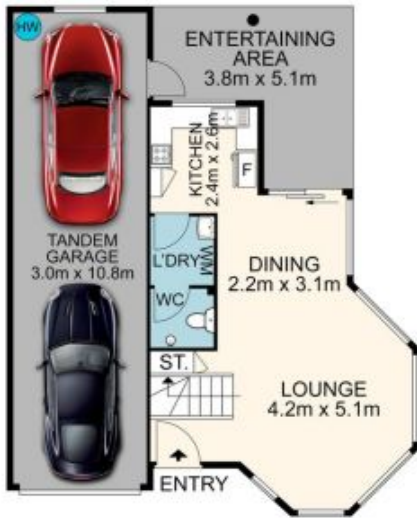


**Sebastian Hughes**  
02 8320 6666

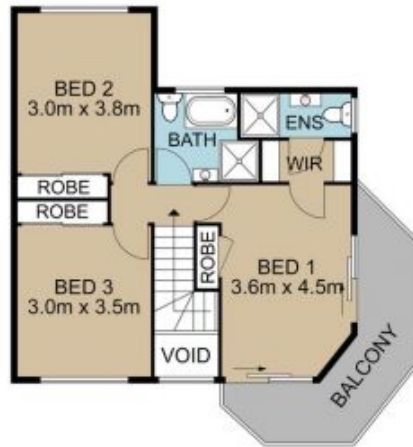
[For full version visit the website](https://www.thepropertyco.com.au)

<https://www.thepropertyco.com.au>

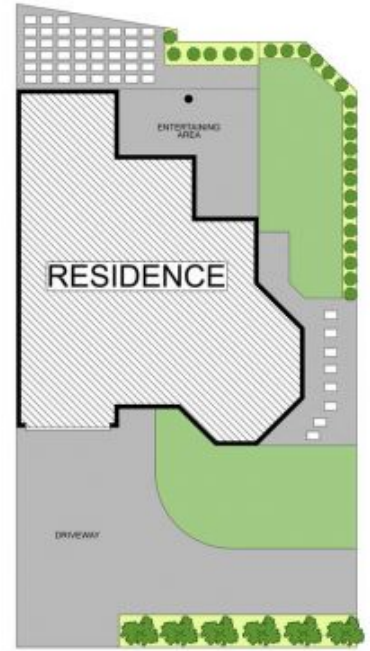
2/19 Wingello Road, Miranda



GROUND FLOOR



FIRST FLOOR



SITE PLAN



**THE PROPERTY CO.**  
GROUP

Please note these measurements are approximate only. The plan is intended as a rough guide for illustrative purpose. It is not warranted or guaranteed to be correct nor is it part of the scale or contract.

