

THE PROPERTY CO.

GROUP



1F/5-29 Wandella Road Miranda NSW

2  1  1 

Conveniently situated on the ground floor of Parkside Village, this recently renovated two bedroom apartment offers open plan living, modern kitchen, new floating floorboards, split system air conditioning, internal laundry with second toilet plus a lock up garage and storeroom. Orientated to the north, the balcony is flooded with natural light, offering gated access to street level, lift access, and an indoor and outdoor pool in the complex. Positioned directly across the road from Seymour Shaw Park, only 120m to the bus stop, 160m to Parkside Plaza Shopping and 900m to Miranda Train Station.

Type : Apartment
Price : Price Guide \$699,000
View : <https://www.thepropertyco.com.au/8322466>



Christopher Igoe
02 8320 6666

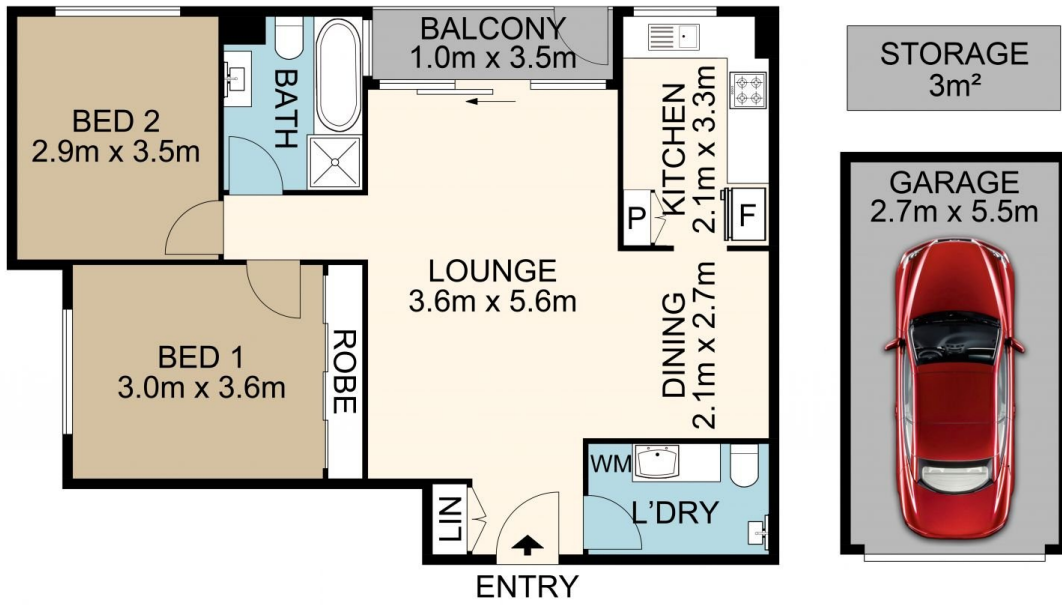


Daniel Barnett
02 8320 6666

[For full version visit the website](https://www.thepropertyco.com.au)

<https://www.thepropertyco.com.au>

1F/5-29 Wandella Road, Miranda



THE PROPERTY CO.
GROUP

Please note these measurements are approximate only. The plan is intended as a rough guide for illustrative purpose. It is not warranted or guaranteed to be correct nor is it part of the scale or contract

