

THE PROPERTY CO.

GROUP



102 Ellesmere Road Gymea Bay NSW

4 🛏 2 🚿 2 🚗

When talking north facing, deep waterfronts in Gymea Bay there are very few opportunities to secure a slice of the most enviable holdings. Surrounded by some of the most expensive homes to sell in the suburb over the last couple of years, this home has been in the same wonderful family for over 60 years, and once you walk through and appreciate how special this opportunity is, you will want to secure it for your family for the next 60 years also. This soul rich home comprises of four bedrooms, plus study, two sun drenched living rooms, two kitchens, and two balconies to take in the incredible views across the bay. Positioned across 2,207sqms, features include double carport plus plenty of off street parking, in-ground swimming pool, oversized boat shed, winch, boat trailer, concrete boat ramp and jetty.

Type : House
Price : For Sale
Land Size : 2207 sqm
View : <https://www.thepropertyco.com.au/8282559>



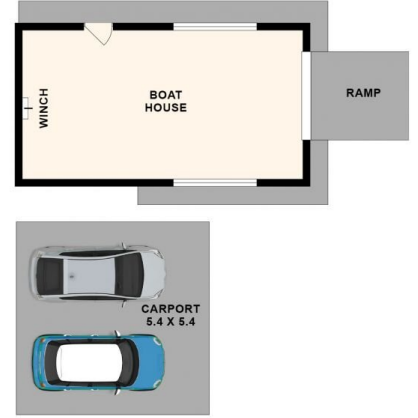
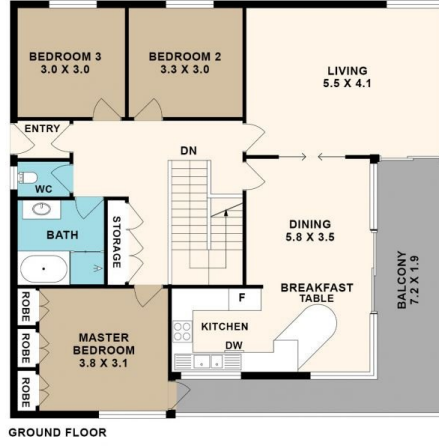
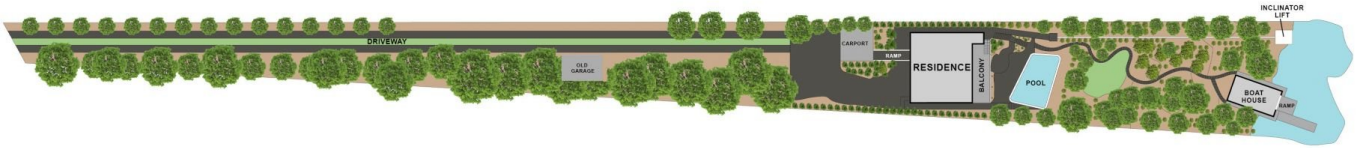
Christopher Igoe
02 8320 6666



Ian Gray
02 8320 6666

[For full version visit the website](https://www.thepropertyco.com.au)

<https://www.thepropertyco.com.au>



102 Ellesmere Rd, Gymea Bay

Floor plan produced by ENFORCEFX.COM - All measurements are approximate. Floor plan is not to scale. All information contained here is believed to be reliable, however we cannot guarantee the accuracy and interested persons should rely on their own inquiries.



THE PROPERTY CO.
GROUP