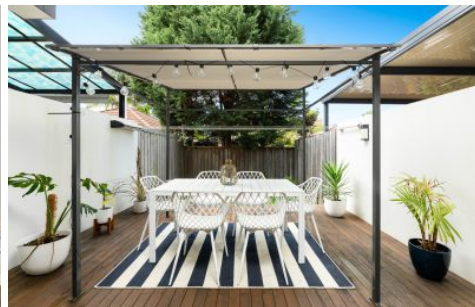


THE PROPERTY CO.

GROUP



28/110-112 Alfred Street Sans Souci NSW

2 🛏️ 2 🚿 1 🚗

Discover the perfect blend of lifestyle and comfort in this boutique townhouse complex. The open-plan design seamlessly integrates indoor and outdoor living, featuring floor-to-ceiling windows that open to a private courtyard, perfect for relaxing or entertaining.

- The gourmet kitchen features premium stone benchtops and high-end Miele appliances
- Generously sized bedrooms include floor-to-ceiling built-in wardrobes and private balconies
- Master bedroom boasts an ensuite, plus a third toilet off the living area for added functionality
- Ducted reverse-cycle air conditioning ensures year-round comfort
- An east-facing backyard provides natural light and warmth

Type : Townhouse

View : <https://www.thepropertyco.com.au/8282374>



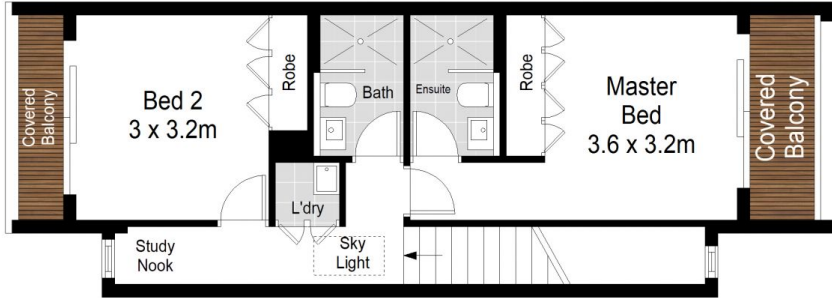
Jason Mikhail
02 8320 6666



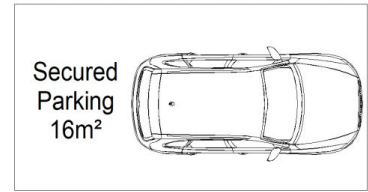
Jonas Kapsanis
02 8320 6666

[For full version visit the website](https://www.thepropertyco.com.au)

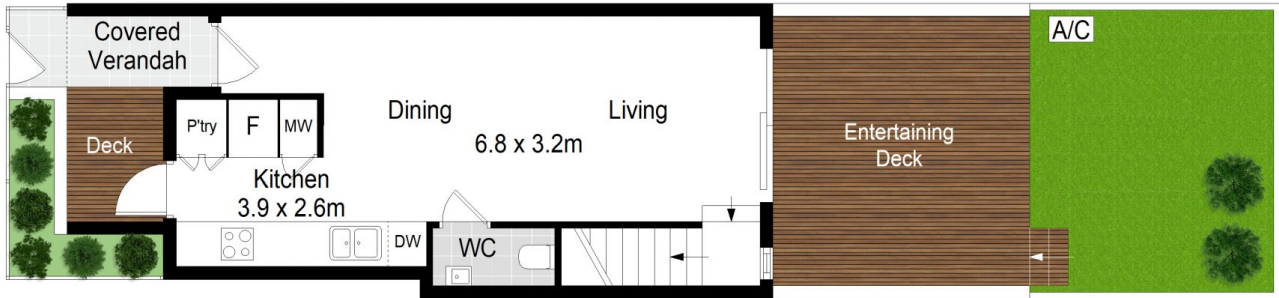
<https://www.thepropertyco.com.au>



FIRST FLOOR



BASEMENT



GROUND FLOOR



28/110 Alfred Street, Sans Souci



Scale in metres. Indicative only. Dimensions are approximate. All information contained herein is gathered from sources we believe to be reliable. However we cannot guarantee its accuracy and interested persons should rely on their own enquiries.