

# THE PROPERTY CO.

GROUP



**35/53 Auburn Street Sutherland NSW**

2  1  1 

Perfectly positioned in a peaceful and central location, this lovely first floor apartment is an ideal entry point to the Shire market for first home buyers. Alternatively, this currently tenanted property would be suitable for investors looking to build their portfolio. Handy to both Sutherland and Kirrawee stations and shops, the location ticks all the boxes.

- Queen sized main bedroom with built-in robe
- Modern bathroom includes a bath
- Lock up garage
- Internal laundry
- Open plan living area leads out to private balcony
- Only 900 metres to South Village
- 1.0km to Kirrawee station, 1.3km to Sutherland station

**Type** : Apartment  
**Price** : \$ 620,000  
**View** : <https://www.thepropertyco.com.au/8263701>



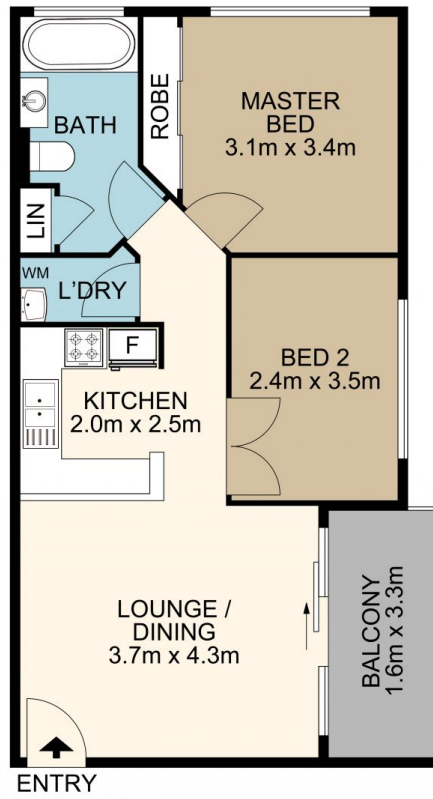
**Ian Gray**  
02 8320 6666



**Jason Mikhail**  
02 8320 6666

[For full version visit the website](https://www.thepropertyco.com.au)

<https://www.thepropertyco.com.au>



### 35/53 Auburn Street, Sutherland

All measurement are approximate. For illustrative purposes only. INT AREA 54M<sup>2</sup>



**THE PROPERTY CO.**  
GROUP