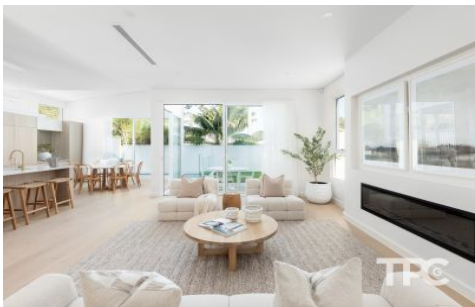


THE PROPERTY CO.

GROUP



20a Bilga Street Kirrawee NSW

4 🏠 3 🚗 2 🚗

Nestled in a family-friendly neighbourhood, just 400m from Kirrawee station and South Village, this brand-new freestanding home epitomises refined Hamptons-inspired elegance. Designed with an open-plan layout, abundant natural light, and high-end finishes, it seamlessly blends charm with modern luxury.

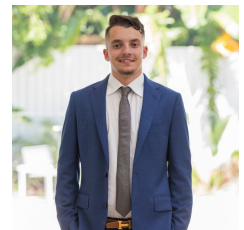
Inside, spacious living and dining areas are bathed in natural light, complemented by a cozy fireplace. Flow effortlessly into a bright, outdoor haven with alfresco dining, BBQ, a pool, and level lawn, perfect for entertaining.

- Spacious open-plan living and dining areas with plenty of natural light and fireplace
- Effortless flow to a bright outdoor area complete with

Type : House
Price : \$ 2,084,000
Land Size : 302.7 sqm
View : <https://www.thepropertyco.com.au/8174585>



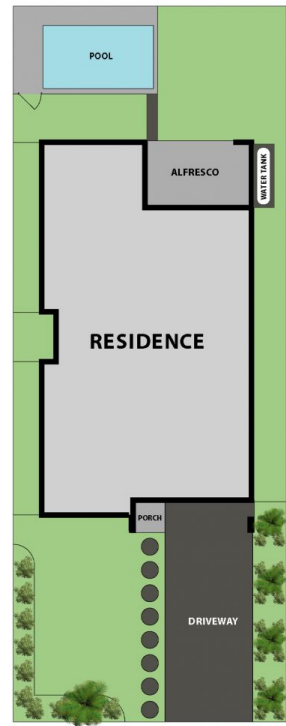
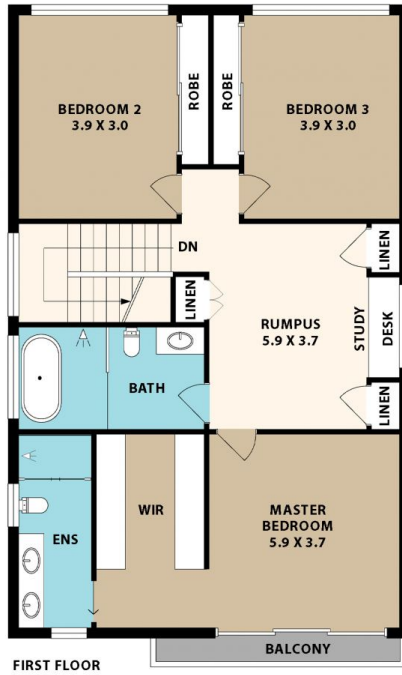
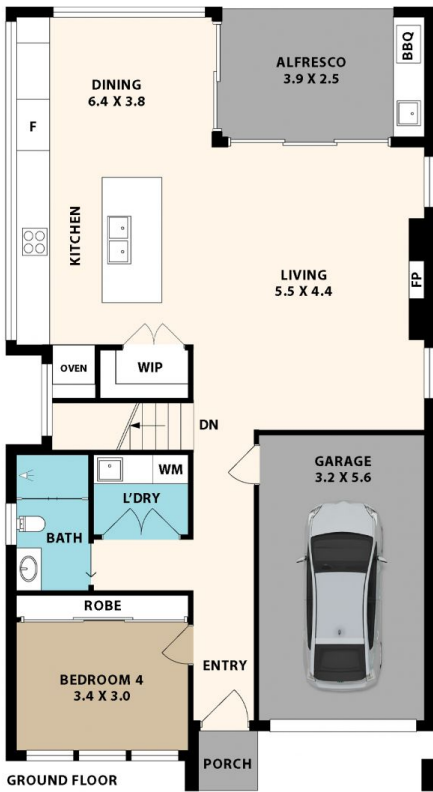
Jason Mikhail
02 8320 6666



Jonas Kapsanis
02 8320 6666

[For full version visit the website](https://www.thepropertyco.com.au)

<https://www.thepropertyco.com.au>



20A Bilga St, Kirrawee

Floor plan produced by ENFORCEFX.COM - All measurements are approximate. Floor plan is not to scale. All information contained here is believed to be reliable, however we cannot guarantee the accuracy and interested persons should rely on their own enquiries.



THE PROPERTY CO.
GROUP