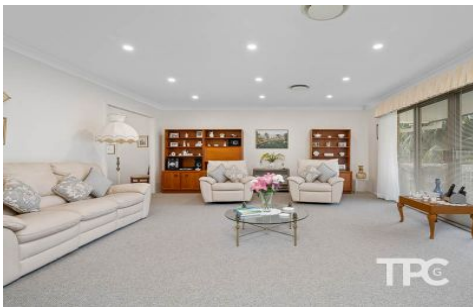


THE PROPERTY CO.

GROUP



1 Nowra Place Gymea Bay NSW

3 2 2

Offered for the first time in 54 years and perfectly situated on a sun-drenched corner block, this immaculately kept brick home offers a flexible floorplan, valley views of the Royal National Park and wonderful lifestyle with its a cul de sac locale. Presenting three bedrooms, all with built in robes, with optional study or fourth bedroom, large open plan lounge room, modern kitchen with adjoining laundry and second bathroom. Additional features include ducted air conditioning, loads of storage including attic ladder to roof void, internal access from double garage and a large downstairs rumpus perfect for games room, work from home office or guest accommodation. Combining beautiful landscaped gardens, watering system and rain water tank, plenty of grassed yard and a recently refurbished salt water in ground pool. Located in a peaceful tree lined street you

Type : House
Price : \$ 1,810,000
Land Size : 588.1 sqm
View : <https://www.thepropertyco.com.au/8137914>



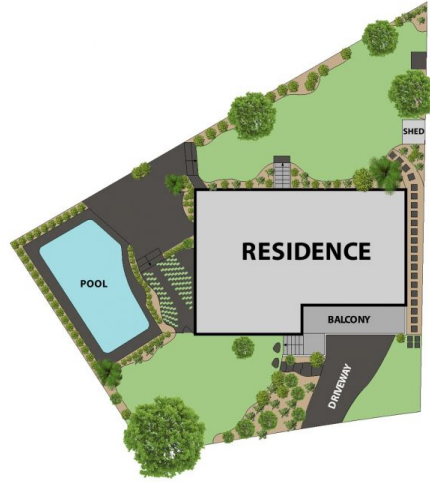
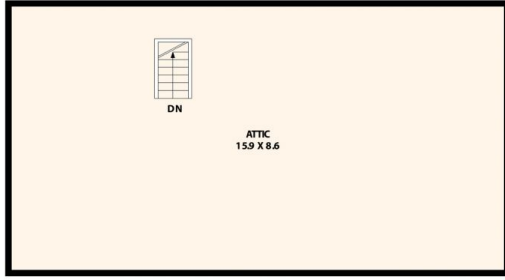
Christopher Igoe
02 8320 6666



Ian Gray
02 8320 6666

[For full version visit the website](https://www.thepropertyco.com.au)

<https://www.thepropertyco.com.au>



1 Nowra Pl, Gymea Bay

Floor plan produced by ENFORCEFX.COM - All measurements are approximate. Floor plan is not to scale. All information contained here is believed to be reliable, however we cannot guarantee the accuracy and interested persons should rely on their own enquiries.



THE PROPERTY CO.
GROUP