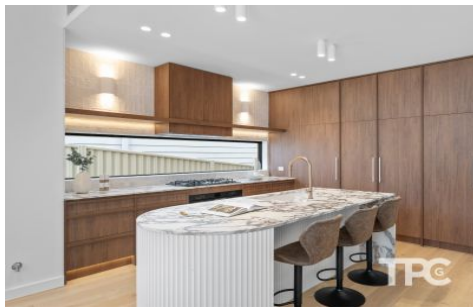


# THE PROPERTY CO.

GROUP



25a North West Arm Road GyMEA NSW

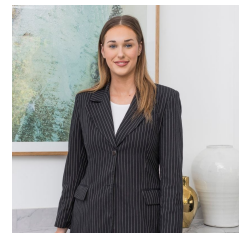
4 3 2

This exceptional brand new, double brick and concrete slab construction residence offers an unparalleled blend of modern design and high end finishes. Featuring four bedrooms of accommodation, including a retreat-style master suite with walk in robe, second living zone, custom wine rack and sitting nook, and beautiful oak timber flooring. Combining bright open-plan living spaces, further enhanced by skylights, effortlessly showcases the luxurious kitchen featuring stone benchtops, integrated fridge/freezer, abundant storage and smeg oven. The home extends to an alfresco dining and BBQ area zone, overlooking the landscaped gardens. Additional features include gas heating point, security intercom, french pattern paved alfresco, alarm system and ducted air conditioning. Perfectly situated 950m from GyMEA train station and

**Type** : Semi Detached  
**Price** : \$ 2,015,000  
**Land Size** : 331.67 sqm  
**View** : <https://www.thepropertyco.com.au/8105658>



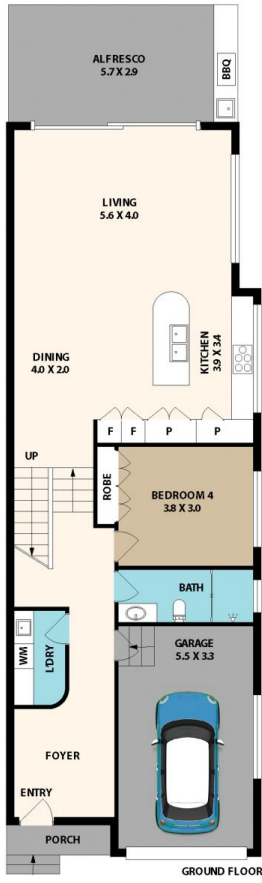
**Christopher Igoe**  
02 8320 6666



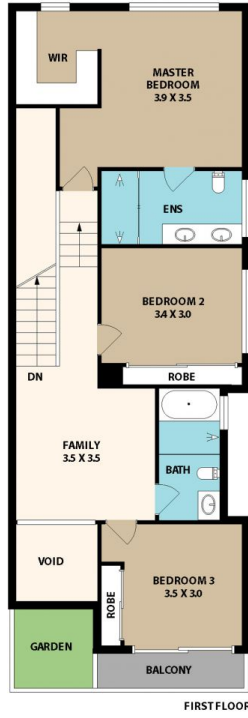
**Emily Cooper**  
02 8320 6666

[For full version visit the website](https://www.thepropertyco.com.au)

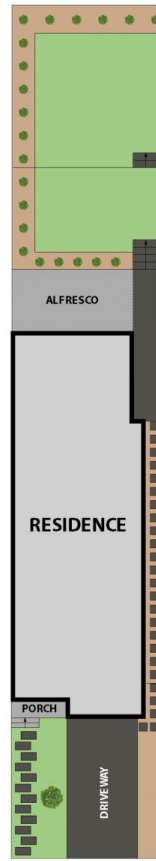
<https://www.thepropertyco.com.au>



GROUND FLOOR



FIRST FLOOR



## 25A North West Arm Rd, Gymea

Floor plan produced by ENFORCEFX.COM - All measurements are approximate. Floor plan is not to scale. All information contained here is believed to be reliable, however we cannot guarantee the accuracy and interested persons should rely on their own enquiries.



**THE PROPERTY CO.**  
GROUP