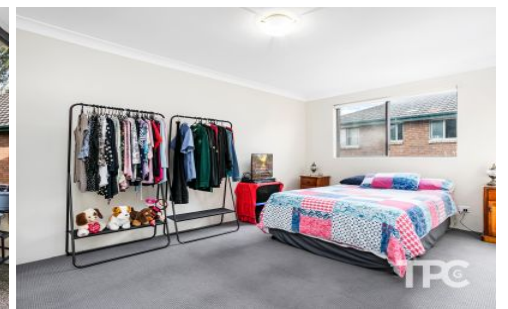


THE PROPERTY CO.

GROUP

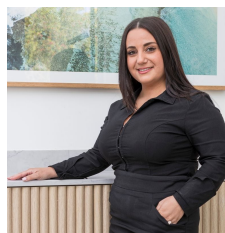


5/454 Guildford Road Guildford NSW

2  1  1 

This top-floor 2-bedroom unit features an updated kitchen with ample bench space and a new bathroom equipped with both a separate shower and bath. The open-plan lounge and dining area create a spacious living environment, complemented by a huge master bedroom with a built-in wardrobe. The unit also includes an internal laundry with plenty of storage and a lock-up garage for added convenience. Located just 500 meters from Guildford Train Station and within walking distance to both St. Patrick's Primary School and Guildford Public School, it offers excellent accessibility. Additionally, the property has a long-standing tenant who is happy to stay on, making it an attractive option for investors.

Type : Unit
Price : \$ 390,000
View : <https://www.thepropertyco.com.au/8083211>

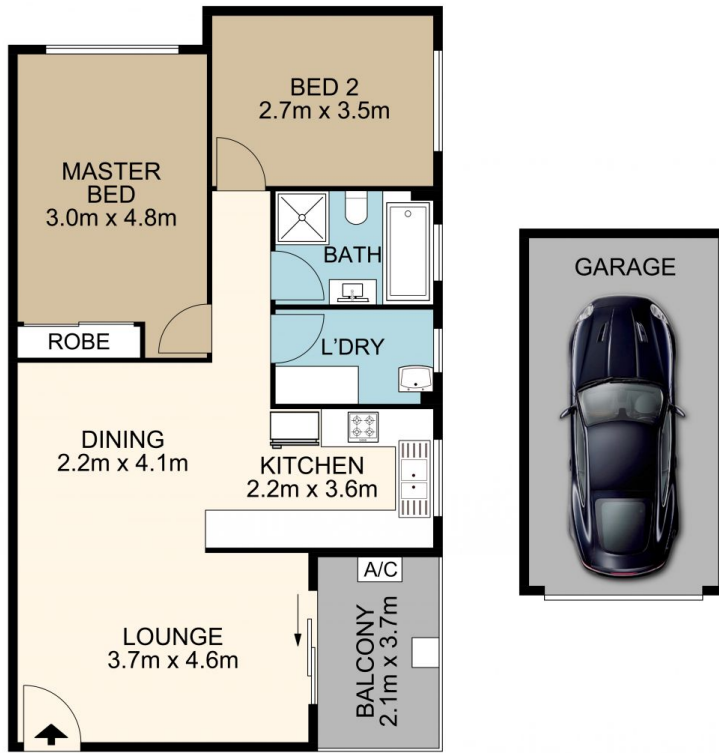


Rhonda Mikha
02 8320 6666

-Top Floor 2 bedroom unit

[For full version visit the website](https://www.thepropertyco.com.au)

<https://www.thepropertyco.com.au>



5/454 Guildford Road, Guildford

All measurement are approximate. For illustrative purposes only. INT AREA 67M²



THE PROPERTY CO.
GROUP