

THE PROPERTY CO.

GROUP



4/736 Kingsway Gymea NSW

2 1 1

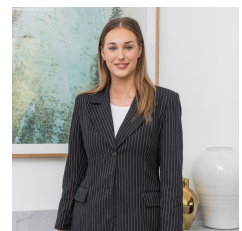
Located at the rear of this boutique complex of only seven is this two-bedroom townhouse presenting a seamless blend of space and convenience. Designed to embrace low maintenance living and easy in/outdoor entertaining, this home offers light-filled interiors and a highly desirable location, moments from Gymea shopping village, cafes, restaurants and public transport.

- Open plan living and dining area that flows seamlessly to the courtyard
- Modern kitchen equipped with oven, electric stove top & ample storage
- Garage with automated roller door & internal access
- Internal laundry with second toilet
- Bedrooms are equipped with their own air conditioning unit
- Oversized main bedroom with built in wardrobe & extra

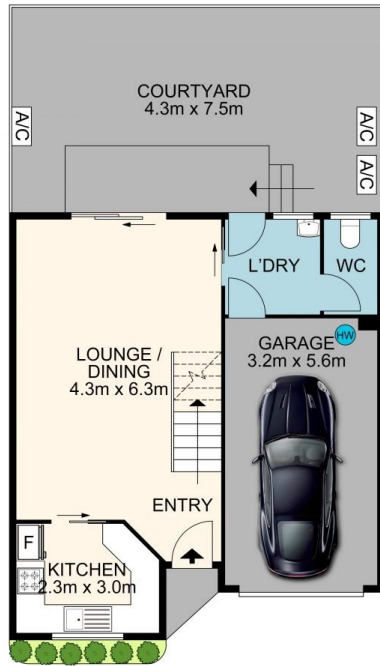
Price : \$ 980,000
Land Size : 145 sqm
View : <https://www.thepropertyco.com.au/7961231>



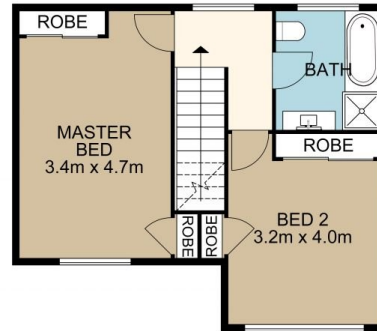
Christopher Igoe
02 8320 6666



Emily Cooper
02 8320 6666



GROUND FLOOR



FIRST FLOOR

4/736-738 Kingsway, Gymea

All measurement are approximate. For illustrative purposes only. INT AREA 119M²



THE PROPERTY CO.
GROUP