




THE PROPERTY CO.

GROUP



229a Loftus Avenue Loftus NSW

3  2  2 

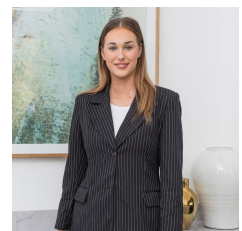
Set in a quiet location this impressive three bedroom villa offers both privacy and convenience, with its open plan living and central location to shops, local parks, public transport, cafes and restaurants. Displaying its hassle-free lifestyle, making this the ideal opportunity for first home buyers, young families, down-sizers and investors.

- Grassed outdoor yard with shed for extra storage
- Double lock up garage with internal access for ease
- Kitchen equipped with dishwasher, oven, electric stovetop and ample storage
- Master bedroom with walk in wardrobe and ensuite
- Both bedrooms equipped with built in wardrobes
- Bathroom with shower and bath as well as added powder room for convenience
- Located 1.3km from Loftus Station, 160m from local bus stop, 260m from Pendlebury Park and 3.6km from

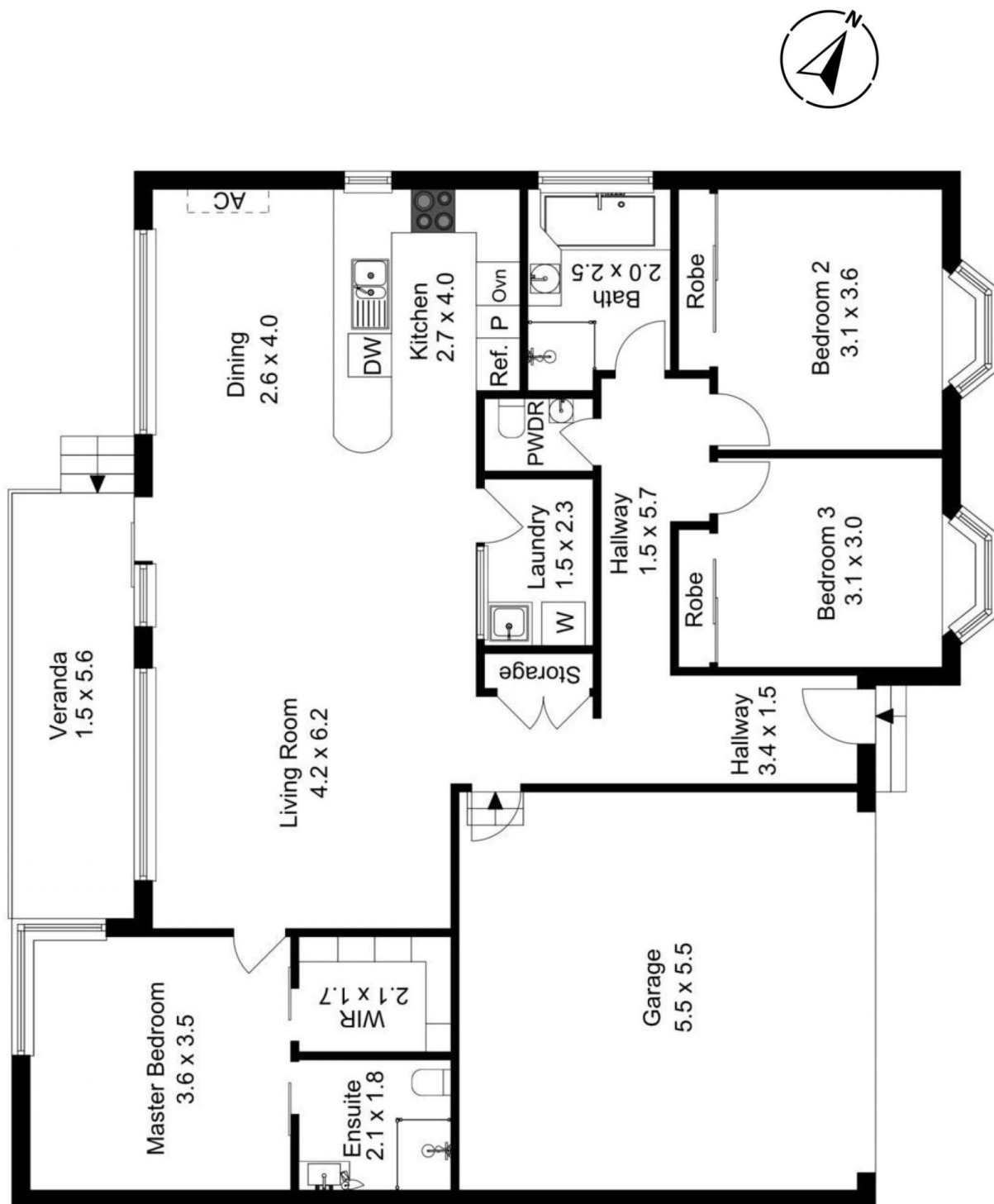
Price : Pre Market Exclusive
Land Size : 341 sqm
View : <https://www.thepropertyco.com.au/7961210>



Christopher Igoe
02 8320 6666



Emily Cooper
02 8320 6666



229A Loftus Avenue, Loftus

All measurements are approximate. For illustrative purposes only.

THE PROPERTY CO.
GROUP