

THE PROPERTY CO.

GROUP



182/360 Kingsway Caringbah NSW

2 2 2

Flooded with natural light and enjoying panoramic views from its twelfth-floor position, this stunning executive apartment is immaculate throughout and sure to impress.

Land Size : 143 sqm

View : <https://www.thepropertyco.com.au/7843492>

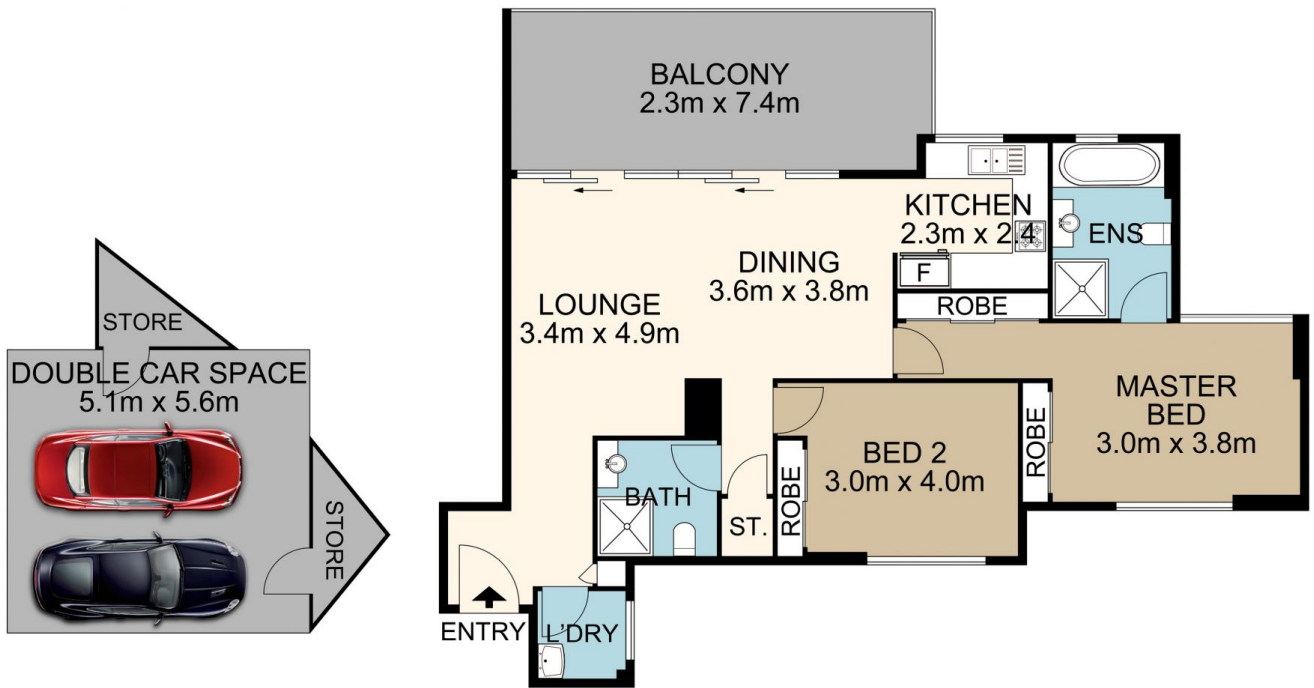
Features Include;

- Spectacular city, bay and ocean views
- Double car space plus lock-up storage in secure basement car park.
- Both bedrooms with built-ins, the main also with an ensuite
- Reverse cycle air-conditioning and ceiling fans for year-round comfort
- Huge entertainers balcony with sunny north-east aspect
- Complex includes indoor heated pool plus gym, spa and sauna
- Dual lift access to all levels of the complex
- Short stroll to shops, restaurants and the train station



John Daewoud
02 8320 6666

<https://www.thepropertyco.com.au>



182/360 Kingsway, Caringbah

All measurements are approximate. For illustrative purposes only.

THE PROPERTY CO.
GROUP